

MiniReflecto R_L + Qd
road marking retroreflectometer.



EASYLUX
RETROREFLECTOMETER

Change your way of work.

It does not seem possible. That a retroreflectometer with - smartphone interface, fast and efficient processor powered by AA-size batteries, sensors for temperature, humidity and inclination, external light suppression, opened measurement area, user removable SDCard, color sun readable LCD, touch screen, LED technology, airplane carry-on luggage carrying case, LOG facilities, configurable timer, special optics for 15 mm profiled road markings, GPS, Bluetooth, IrDa, RFid - could be so light and small. But it is.

In fact no other retroreflectometer can match the size, the design, the performance and the weight of the new MiniReflecto....It simply can not be done.



Mini Retroreflectometers

All MiniReflecto are powered by rechargeable AA-size batteries.

Creating an entirely new design meant inventing entirely new technology.

Easylux holds the most advanced handheld solution for accurately measures the retroreflectance of road markings, road studs, traffic signs and safety clothing.

We clearly realized how unsafe and unsuitable big and heavy instruments are for road visibility control.

The patented MiniReflecto family is a turning point for the face of the standard retroreflectometers.

It is time to leave the big, heavy dinosaurs of retroreflectometers in the past.



Road studs retroreflectometer

Exclusive dual angle geometry
0.2° (0.33°) and 1.0° simultaneously.

ASTM E1696 0.2° / 1°

EN 1463 0.3° / 1°

Road sign Safety Clothing

The innovative EASYLUX optical system can measure up to 4 (four) simultaneous observation angles. The entrance angle can be fixed at -4° ($+5^\circ$) or it can be continuously adjusted.

ASTM E1709	0.2°
ASTM E2540	0.5°
EN 12899-1	0.33°
ISO 20471	0.2°, 0.33°, 1.0°, 1.5°



Road Sign retroreflectometer

Exclusive 4 simultaneous observation angles in one compact instrument for full compliance with **ISO 20471 - High visibility clothing**.

Road marking

CEN 30-meter geometry.

15-meter geometry.

50-meter geometry.



Test Certificate No. 0913-2014-04

Our innovative technology was certified by StrAusZert independent laboratory.

Road marking retroreflectometer

Measures the night visibility **R_L**, the day visibility **Q_d**, the visibility under wet conditions **R_{L wet}** and under continuous wetting conditions **R_{L rain}** of all types and colors of road markings.

EN1436	RL Qd
ASTM E1710	RL
ASTM E2302	Qd
ASTM E2177	RL wet
ASTM E2832	RL rain



External Beam Retroreflectometer.

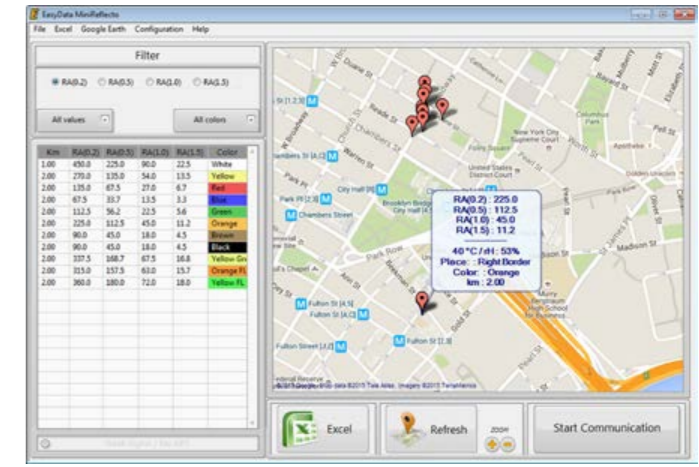
The exclusive external light suppression technology allows free access to the measurement area for **R_{L rain}** compatibility.





Android interface:

- Remote screen.
- Measurements.
- Share Data.
- Take Pictures.



Easydata is a free software tool developed to manage measured figures of all Easylux retroreflectometers.

- Filter data by value and color.
- Generate Excel measurements reports.
- Generate Google Earth KML reports.
- Display measured points on the map.



Portability

Carrying a **road marking retroreflector** in a backpack opens new business possibilities.



**Continuous wetting
compatible technology.**

ASTM E2832 R_L-2
EN 1436

LOG DATABASE

- Road Name;
- Milestone mark;
- Operator's name;
- Direction (north, south, east, west);
- Material (paint, thermoplastic, prismatic, ...);
- Color;
- Place (left border, center line, etc.);
- Free notes (dusty, wet, sectioned, ...)



All-in-One

Retroreflectometers for road marking, road studs and road signs into a single light box.



CLASSIC

EasyLux classic retroreflectometers are designed with focus on simplicity and practicality. All classic products use LED technology. It makes the instrument energy efficient and almost maintenance-free.

EasyLux Vertical classic for road signs and safety clothing is the most compact dual angle retroreflectorometer in the world market. Being only 180 mm wide and 860 g weight, this practical instrument can measure the retroreflection R_A of all type and colors of road signs and others materials fast and effortlessly. Complies with ASTM E1709, ASTM E2540, EN12899.



EasyLux Road Studs retroreflectorometer is a robust and very compact instrument. Weighing only 3 kg it was designed to measure the retroreflection R_I of all types and colors of road studs. Complies with ASTM E1696, EN1463.

The stray light suppression technology allows full access to the measurement area at time of reading. It makes correct field positioning and precise entrance angle control possible.



EasyLux Horizontal classic for road markings is robust, simple and intuitive handling instrument which can simultaneously evaluate 30-meter (or 15-meter) nighttime visibility R_L , daytime visibility Q_d and register the ambient temperature and relative air humidity quickly, easily and effortlessly. Complies with ASTM E1710, ASTM E2302, ASTM E2177, EN1436.



StrAusZert Germany certificate
No. 0913-2014-04

Dynamic Retroreflectometer

The **Easylux Dynamic** is a LED technology highway continuous retroreflectometer for road markings.

The LED system makes the instrument almost maintenance-free and eliminates the periodic replacement of light bulbs of old-technology devices.

Measures the retroreflectivity R_L of all colors and types of road markings with 30-meter geometry and records and classify all road studs.

Easylux Dynamic retroreflectometer complies with ASTM E1710, EN1436 and works at normal traffic speed (120 km/h) under any lighting conditions - day time or night time.



Dynamic retroreflectometer wireless remote tablet:

- Video overlay with position indicator.
- R_L progression chart.
- Real time value and average chart.
- Pre-programmed messages.



Dynamic

CEN 30-meter geometry:

- 88.76° / 1.05° (ASTM E1710)
- 1.24° / 2.29° (EN1436)

15-meter geometry available.

Picture of a 15-meter (86.5° / 1.5°) dynamic retroreflectometer.



EasyLux Retroreflectometers

Av. Artur de Queirós, 780

Santo André - SP - Brazil.

09015-510

Phone: +55 11 3438 3448

Phone: +55 11 2564 4868

vendas@easylux.com.br

www.easylux.com.br

15 mm

Profiled road markings
with no adjustments.